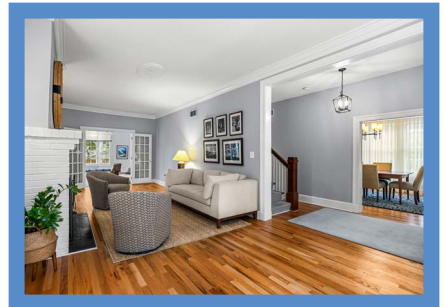
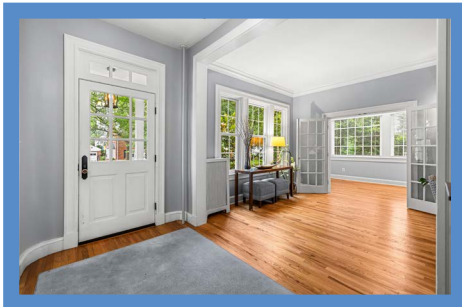


*Hubble
Bisbee*

CHRISTIE'S
INTERNATIONAL REAL ESTATE



STONELEIGH
821 WELLINGTON ROAD



LOCATIONS

2330 W Joppa Road, Suite 104
Lutherville, MD 21093

181 Harry S Truman Pkwy Ste 200
Annapolis, MD 21401

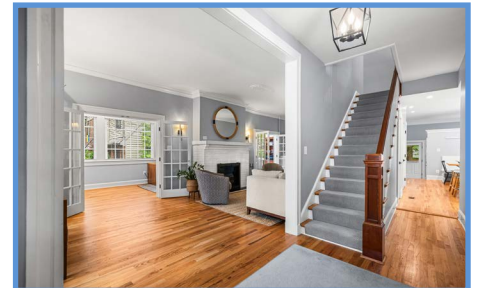
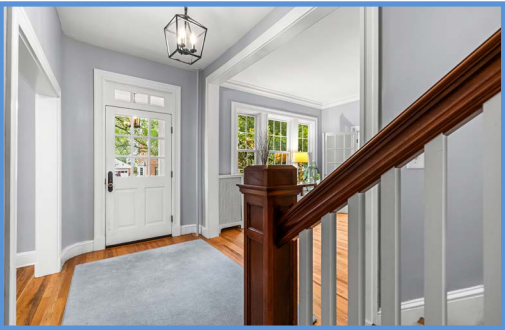


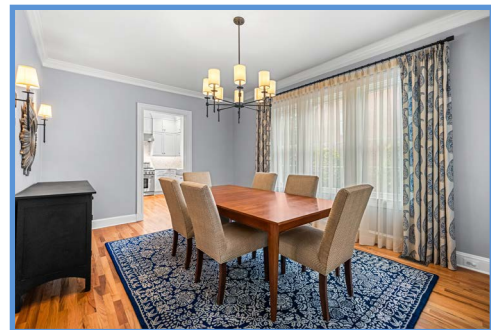
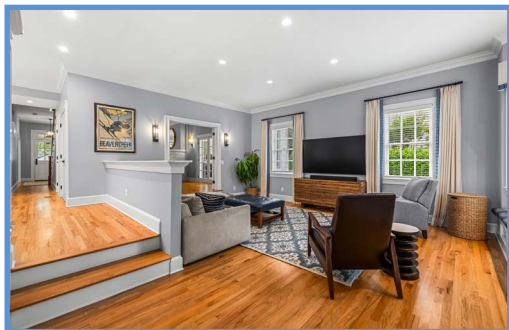
PAT WARREN

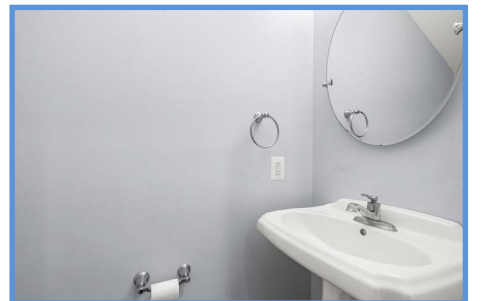
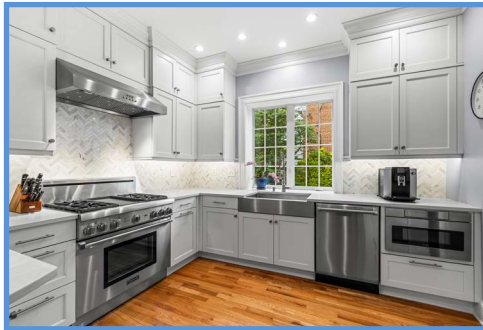
REALTOR®

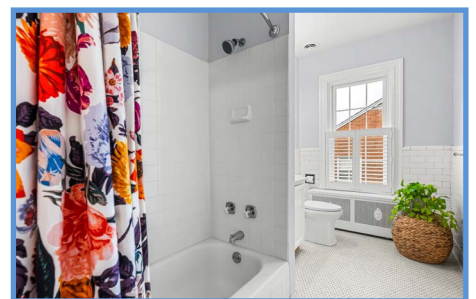
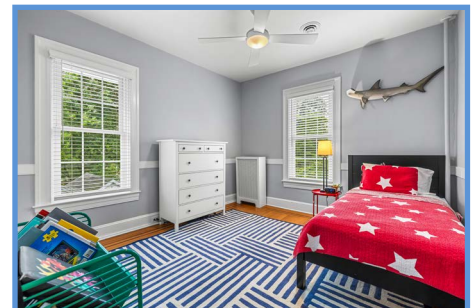
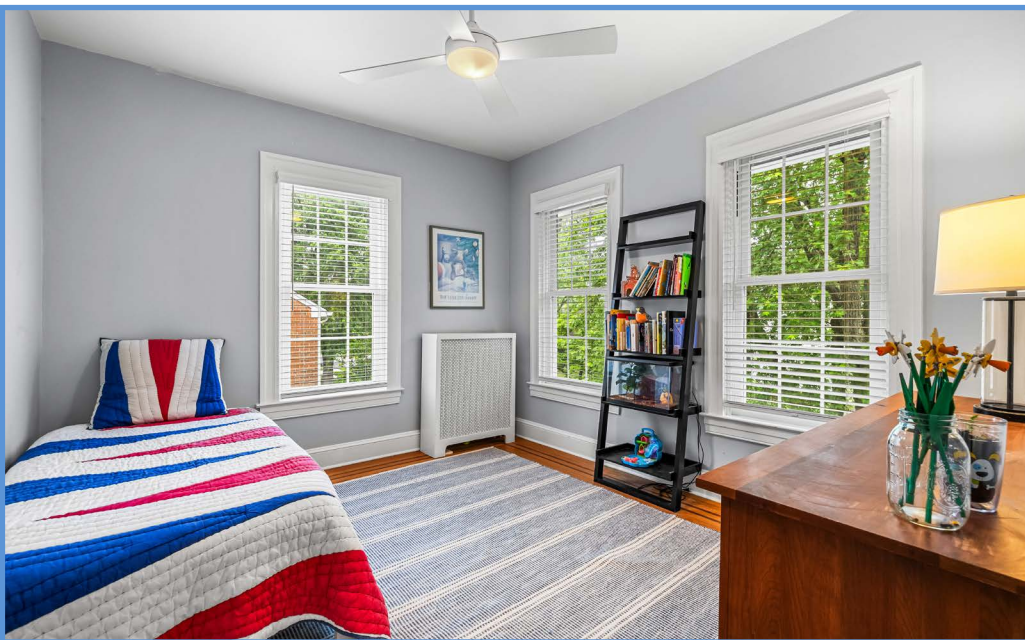
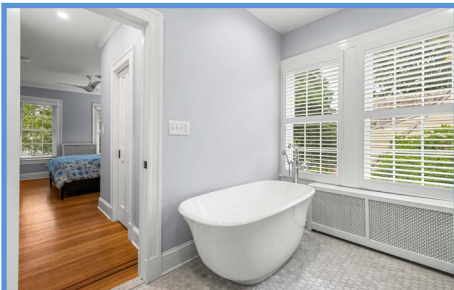
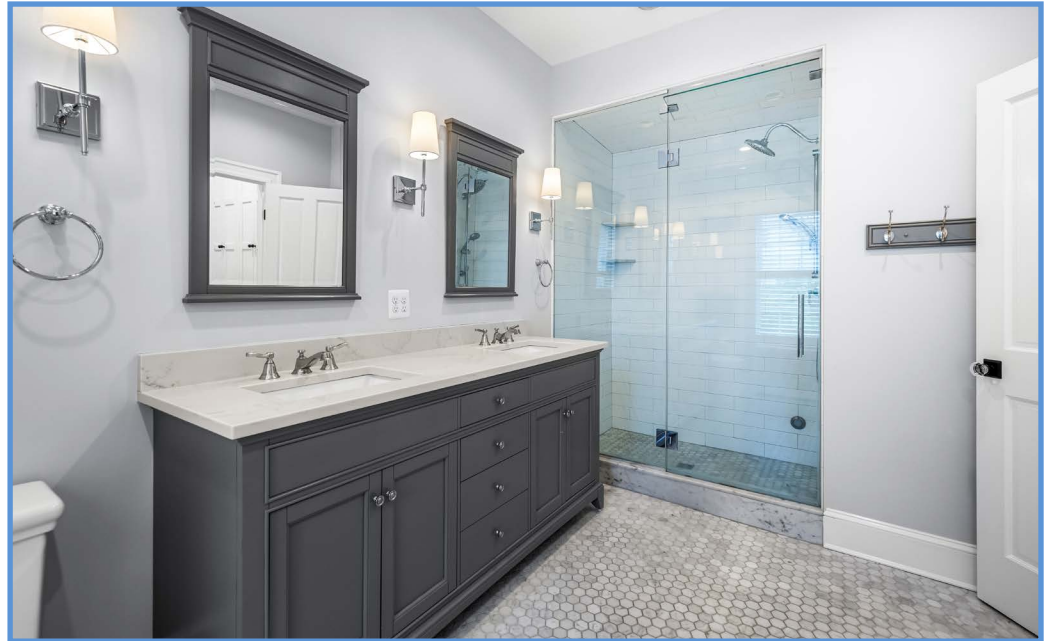
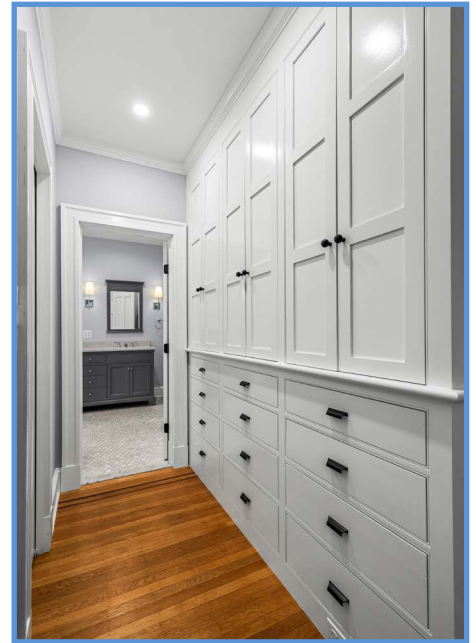
Pat@hubblebisbee.com
410-404-1062 (Mobile)
410-321-1411 (Office)

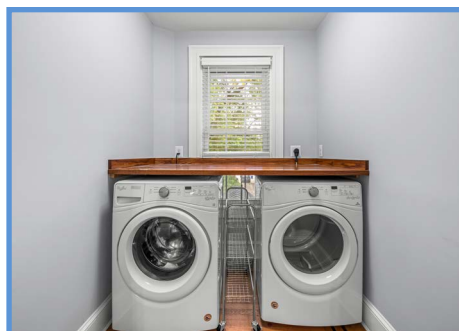
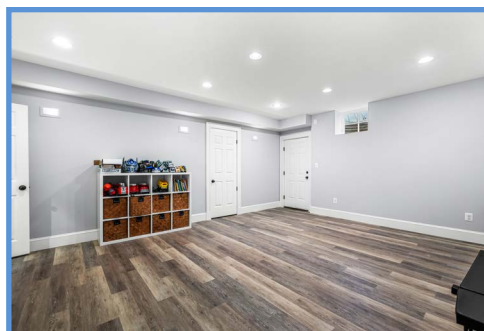
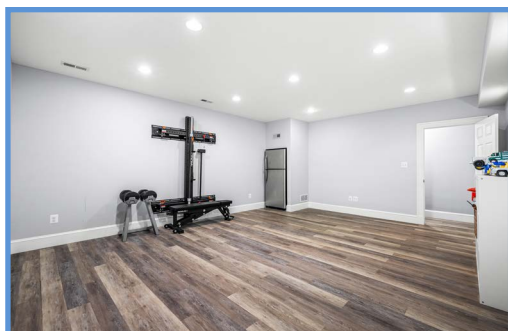
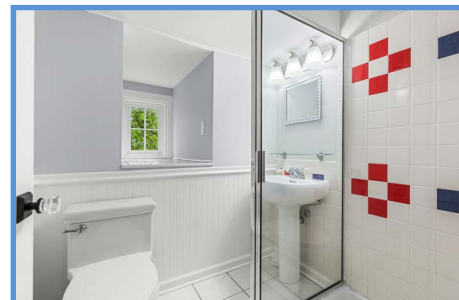
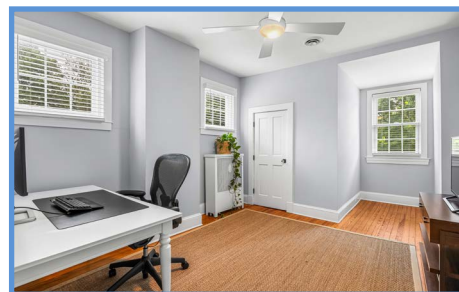
WWW.HUBBLEBISBEE.COM | (410) 321-1411 (OFFICE) | 











FOYER 18'0" X 6'3"

- Paneled entry door with 9-pane window and transom
- Hardwood flooring
- Open oak staircase with hardwood handrails and carpet runner
- Pendant light
- Flows to Kitchen
- Wide cased portal to Dining Room
- Oversize cased portal to Living Room

LIVING ROOM 29'5" X 11'2"

- Hardwood flooring
- Brick woodburning fireplace with brick mantel shelf
- Triple window
- Built-up crown molding
- Two modern wall sconce lights with shades
- French doors to step-down to Family Room
- Two sets of French doors to Sunroom

SUNROOM 29'5" X 8'1"

- Hardwood flooring
- Three walls of windows with plantation blinds
- Two modern ceiling lights

DINING ROOM 17'8" X 11'11"

- Hardwood flooring
- Two triple windows with custom drapery treatments
- Built-up crown molding
- Modern 8-light chandelier with shades
- Two matching wall sconce lights with shades
- Tall cased portal to Kitchen

KITCHEN 20'10" X 15'4"

- Hardwood flooring
- Brookhaven recess-panel white cabinetry including peninsula/ breakfast bar, pantry cabinet, upper wall cabinets to ceiling, 2 lazy-Susan base cabinets, roll-out trash/recycle bins and dovetailed drawers
- Marble finish quartz counters
- Chevron pattern marble backsplashes
- Thermador stainless steel French door refrigerator
- Thermador stainless steel commercial grade gas range with griddle and stainless steel range hood with lighting
- Sharp stainless steel built-in microwave

- Thermador stainless steel dishwasher
- Elkay stainless steel farmhouse sink with gooseneck faucet and Insinkerator disposal
- Breakfast Area (10'8" X 9'6") with custom built-in banquette seating, window with plantation blind and knee-wall overlook with steps down to Family Room
- Double window at sink
- Built-up crown molding
- Custom fitted double pantry closet
- Recessed lighting
- Access to Powder Room

FAMILY ROOM 19'5" X 19'5"

- Hardwood flooring
- Bay window with built-in window seat/storage bench with plantation blinds and custom seat cushion and valance
- Two additional windows with plantation blinds and custom drapery treatments
- Exit door with window and plantation blind
- Built-up crown molding
- Recessed lighting

- Custom fitted double closet
- Open carpeted staircase to Lower Level with custom built-in cabinetry, window with plantation blind and transom window
- Step-up through French doors to Living Room
- Wall mount TV excluded, bracket to remain

POWDER ROOM

- Hardwood flooring
- Pedestal sink with adjustable wall mounted beveled mirror and overhead lighting
- Mirabelle flush
- Exhaust fan

SECOND LEVEL

HALL 10'0" X 6'0"

- Landing for staircase with banister overlook- continues to 3rd Level
- Hardwood flooring with inlaid border
- Pendant light
- Modern ceiling light

PRIMARY BEDROOM

13'11" X 11'1"

- Hardwood flooring with inlaid double border
- Triple window and 2 additional windows with plantation blinds
- Crown molding
- Recessed lighting
- Ceiling fan with light
- Passage to Primary Bath with custom built-in wardrobe cabinetry and pocket door to custom fitted walk-in closet

PRIMARY BATH 14'6" X 8'5"

- Marble hex-tile floor including shower stall
- Chest double vanity with marble finish quartz top, undermount sinks, matching framed mirrors and wall scone lighting with shades
- Free-standing soaking tub with handheld shower
- Steam shower stall with subway tile walls and ceiling, additional handheld shower, recessed lighting and glass door enclosure
- Mirabelle flush
- Double window with plantation shutters
- Recessed lighting
- Exhaust fans

BEDROOM 2 12'0" X 11'7"

- Hardwood flooring with inlaid double border
- Two windows with plantation blinds
- Custom fitted closet
- Ceiling fan with light
- Chair rail

BEDROOM 3 12'2" X 11'0"

- Hardwood flooring with inlaid double border
- Three windows with plantation blinds
- Ceiling fan with light

HALL BATH 12'2" X 6'2"

- Ceramic hex-tile floor
- Subway tile wainscot
- Vanity with marble finish quartz top, undermount sink, framed mirror and overhead lighting
- Tub/shower combination with ceramic tile surround
- Kohler flush
- Window with lower sash plantation shutters
- Ceiling light

LAUNDRY ROOM 6'10" X 6'0"

- Double door entry
- Hardwood flooring with inlaid double border
- Window with plantation blind
- Whirlpool washer and dryer beneath hardwood folding counter
- Ceiling light

THIRD LEVEL

HALL

- Landing for staircase
- Pine flooring
- Ceiling light
- Ceiling panel attic access

BEDROOM 4 24'7" X 12'2"

- Pine flooring
- Four windows with plantation blinds- 2 in dormer recesses
- Walk-in cedar closet
- Ceiling fan with light

BEDROOM 5 24'7" X 11'1"

- Pine flooring
- Four windows with plantation blinds- 2 in dormer recesses
- Walk-in closet
- Ceiling fan with light

HALL BATH 6'0" X 5'1"

- Marble finish ceramic tile floor
- Pedestal sink with overhead light

- Glass-enclosed shower stall with ceramic tile walls and recessed light
- Mirabelle flush
- Window in ceramic tiled recess

LOWER LEVEL

RECREATION ROOM

20'1" X 16'4"

- Luxury vinyl plank flooring
- Transom window
- Exit door
- Recessed lighting
- Three recessed wall lights
- Frigidaire stainless steel refrigerator

UTILITY ROOM 27'10" X 27'10"

- Unfinished
- Kenmore gas-fired boiler for radiator heat
- Carrier HVAC unit with gas heat
- Carrier electric CAC unit
- Kenmore gas-fired water heater
- Electric service panels
- Nine windows
- Sump pump
- Work bench with stainless steel sink

EXTERIOR

- Stucco exterior walls
- Architectural shingle roof
- Replaced windows and doors
- Bluestone walkway, steps and covered front porch at main entry
- Fenced back yard with wood privacy fencing and black metal fencing
- Concrete double-width driveway/ parking pad
- Bluestone walkway and steps from driveway to patio
- Flagstone patio
- Covered back porch from Family Room
- Stacked stone garden wall
- Beautiful professional landscaping including border gardens in fenced back yard
- Large garden/storage shed-former garage, as-is
- Great Stoneleigh location on a quiet street with just a short stroll to shops and eateries

All information contained herein deemed reliable but not guaranteed by the Broker



*Hubble
Bisbee*

CHRISTIE'S
INTERNATIONAL REAL ESTATE

GREEN SPRING
STATION
410-321-1411



ANNAPOLIS
410-321-1833

